

**LINKSYS** SMARTWIFI

# Linksys Velop MX10 (Wi-Fi 6) Full Setup

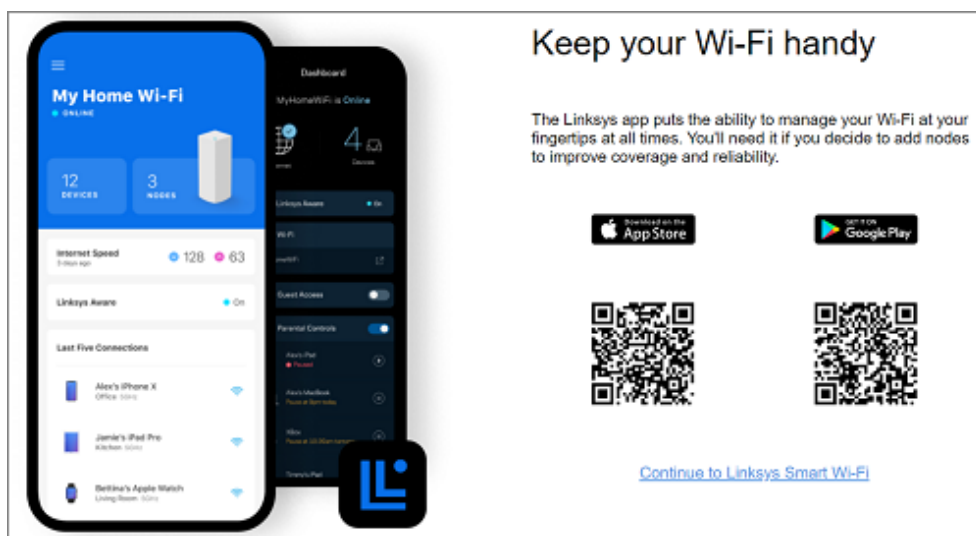
**Manual**



Scan the QR code to  
visit our website

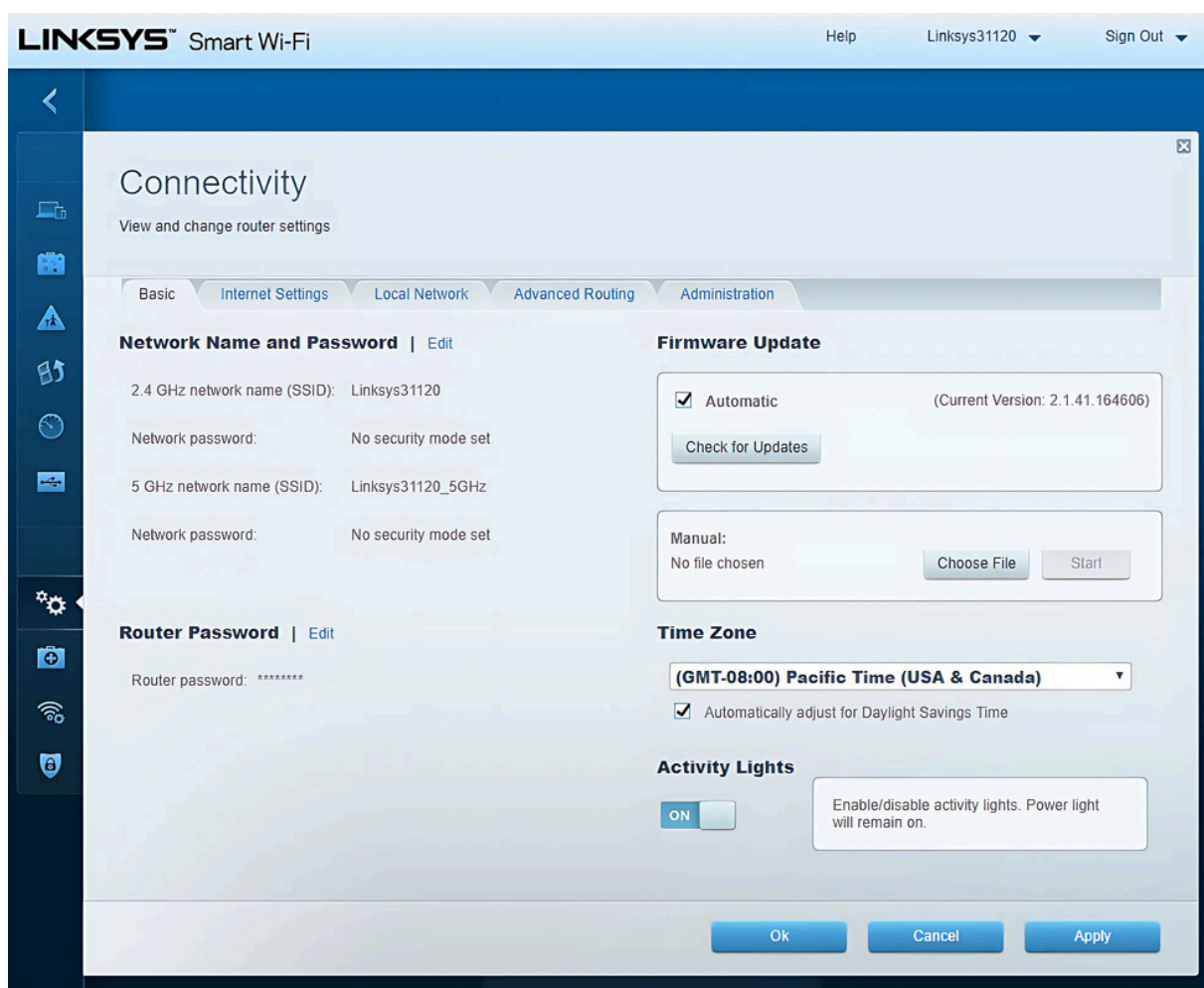
# ▶ Linksys Velop MX10 (Wi-Fi 6) Full Setup

- Take your main Velop node and plug it in via Ethernet directly into the modem. Plug in power too. Let it boot.
- You need to download the Linksys app on your phone device, which is available on the Play Store or App Store.
- Open the app. Hit "Set Up a New Wi-Fi Network." Choose Velop when it asks what you're setting up. It'll ask for some permissions — location, Bluetooth, etc. Just say yes to everything for now.



- Sometimes the app instantly finds the node via Bluetooth. Sometimes... not so much. If it stalls, just close and relaunch the app. Still nothing? Unplug the node for 10 seconds, plug it back in, wait, and try again.
- Once it does find the node, it'll walk you through naming your network and setting a password.

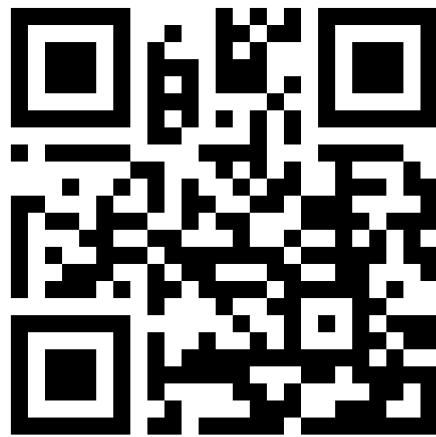
- Pick a Wi-Fi name (SSID) and a password. If you're replacing an old router and want all your devices to reconnect automatically, just reuse your old SSID/password.
- Once your main node is good to go, the app will ask if you want to add more. If you've got more nodes (like a 2- or 3-pack), now's the time.
- Plug the next one in, wait for the light, and follow the prompts. It auto-connects to the parent node wirelessly.
- First-time setup often triggers a firmware update. Just let it run. It'll reboot on its own. If it hangs forever, again — close/reopen the app.



LINKSYS SMARTWIFI

# THANK YOU

 [support@wifi-linksys.com](mailto:support@wifi-linksys.com)



Scan the QR code to  
visit our website